



COMPANY PROFILE

MPAI PROJECTS & CONSULTING
SANAS Accreditation LIFT0040
Department of Employment &
Labour Accreditation LEPC ISP0040



employment & labour
Department:
Employment and Labour
REPUBLIC OF SOUTH AFRICA





ABOUT COMPANY

This entity started on the 1st April 2015 and is providing services to the people of South Africa with dignity and respect. This entity came to the market focusing primarily on providing support, assistance and guidance to owners, as well as representatives of owners of lifts and escalators.

VISION

Our vision is to become a credible, progressive, professional and successful consultant in insuring that our clients pay the most cost effective fees, on services they receive.

MISSION

Our mission is to educate the service providers about the regulations and create a healthy relationship between service provider and the client.

PREMISES / ZONING:

Our head office is situated in Ekurhuleni Gauteng province, and we operate nationally including the continent of Africa.

SERVICES OFFERED

CONTRACT NEGOTIATIONS

We negotiate the maintenance contract on your behalf in order to obtain the best terms for the best possible price.

REGULATORY INSPECTIONS

ANNEXURE {A} and ANNEXURE {B} inspections. We also do inspections before re-instating an elevator back into service after an incident has occurred.

MEDIATION

Are you in conflict with your deputed maintenance company? We act as mediators striving to achieve a mutual beneficial resolution.

AUDITS & SURVEYS

Audits and surveys help you establish conclusively whether you are receiving the proper levels of service in terms of your maintenance contract and to verify whether performance parameters are being adhered to.

SERVICES OFFERED

INSURANCE ASSESSMENTS

Do you need a professional assessment performed for insurance claims? or, if you are an insurer, do you require professional verification or validity? We are able to act as assessors.

ACCIDENT AND INCIDENT INVESTIGATIONS

We act as independent investigators with regards to accidents and investigations.

PROJECT MANAGEMENT

We act as project managers (elevators and escalators) from conceptual stage through to completion stage of your project, be it a new installation, modernization, addition or alteration.

TRADE TESTS

We are registered assessors and moderators. We do a trade test evaluations and trade testing (elevators).

SPECIALISED TRAINING

We are able to train apprentices and artisans on elevators and escalators.

EXPERIENCE AND EXPERTISE

We are specialists in the design, testing and maintenance inspection of elevators, escalators, moving walkways and many other conveyances that move people. We have an extensive knowledge on different products namely: OTIS; THYSSSENKRUPP; SCHINDLER; MITSUBISHI; and KONE.

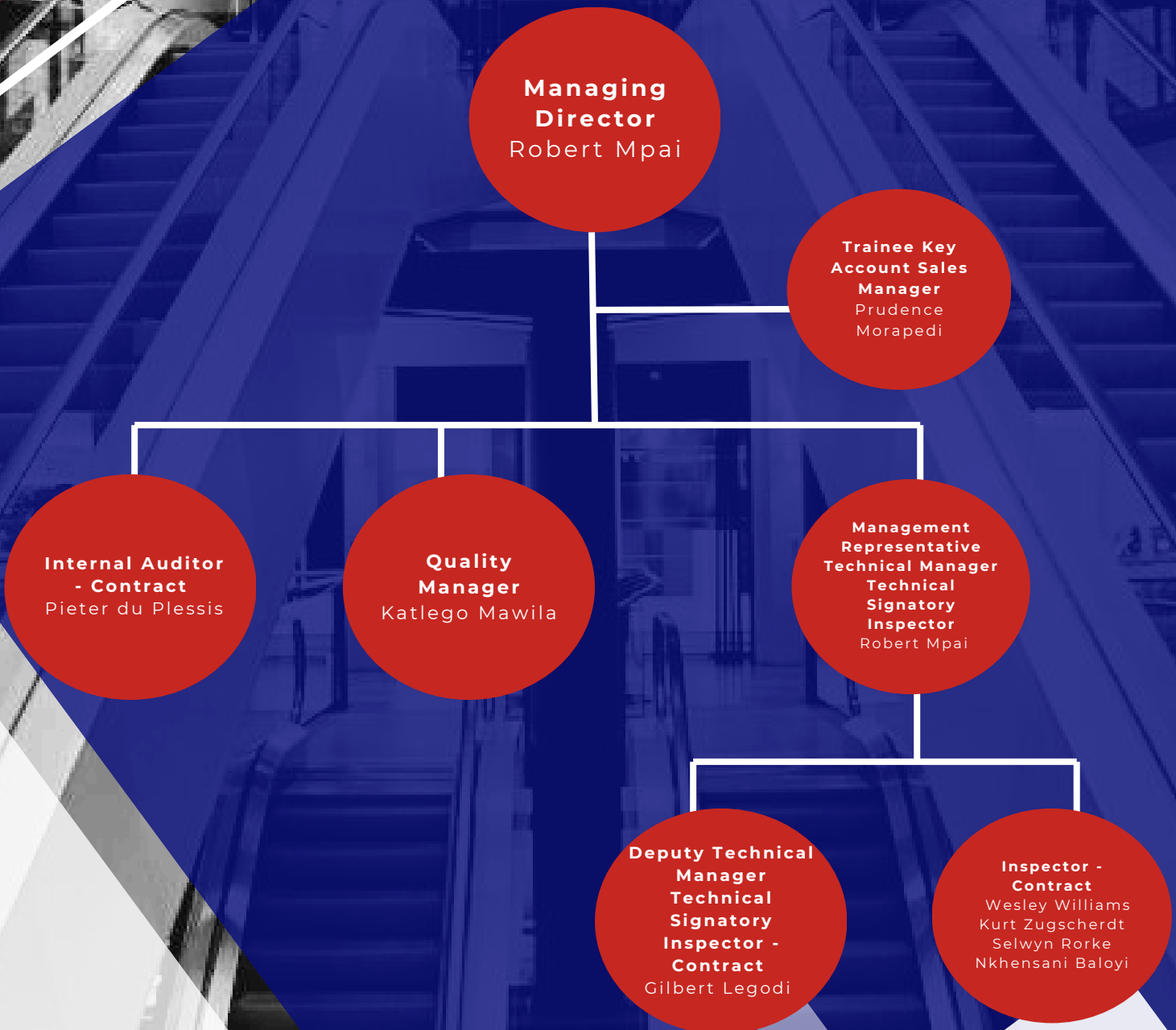
MEMBERS HOLD THE FOLLOWING PROFESSIONAL QUALIFICATIONS:

- National Diploma in Electrical Engineering
- Registered Lift Inspector [ECSA]
- Professional Engineering Technician [ECSA]
- Degree in Civil Engineering
- Degree in Mechanical Engineering
- Qualified Artisan
- Degree in Project Management
- Registered Trade Test Practitioner (NAMB/DHET)

PARTICIPATION:

- Founder Member & National Chairperson of LPDA [Lift Professional Development Association]
- Member of BMF [Black Management Forum]
- Member of BBCBE [Black Business Council in Building Environment]
- Members of SANAS Technical Steering Committee.
- Member of Department of Labour Technical Committee
- Member of Accredited Lifts Company Association. (ALICA)
- Member of CIDB
- Member of CBE
- Member of ECSA

ORGANOGRAM



OUR CLIENTS



AIRPORTS COMPANY
SOUTH AFRICA

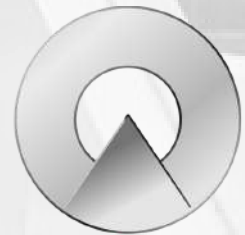


thyssenkrupp

OTIS



Ekurhuleni
METROPOLITAN MUNICIPALITY



Schindler

NATIONAL HOME BUILDERS
NHBRC
REGISTRATION COUNCIL



CSIR
Touching lives through innovation

UNISA



university
of south africa



Reclaiming Africa's Intellectual Futures



CERTIFICATE OF ACCREDITATION

In terms of section 22(2)(b) of the Accreditation for Conformity Assessment, Calibration and Good Laboratory Practice Act, 2006 (Act 19 of 2006), read with sections 23(1), (2) and (3) of the said Act, I hereby certify that:-

MPAI PROJECTS AND CONSULTING (PTY) LTD
Co. Reg. No.: 2015/117038/07
KEMPTON PARK

Accreditation Number: **LIFT0040**

is a South African National Accreditation System Accredited Inspection Body to undertake **TYPE A** inspection provided that all SANAS conditions and requirements are complied with

This certificate is valid as per the scope as stated in the accompanying scope of accreditation, Annexure "A", bearing the above accreditation number for

INSPECTION OF LIFTS, ESCALATORS AND PASSENGER CONVEYORS

The facility is accredited in accordance with the recognised International Standard

ISO/IEC 17020:2012

The accreditation demonstrates technical competency for a defined scope and the operation of a management system

While this certificate remains valid, the Accredited Facility named above is authorised to use the relevant SANAS accreditation symbol to issue facility reports and/or certificates

A handwritten signature in black ink, appearing to read 'F Osman', is written over a horizontal line.

Mr F Osman
Acting Chief Executive Officer
Effective Date: 23 February 2025
Certificate Expires: 22 February 2029

This certificate does not on its own confer authority to act as an Approved Inspection Authority as contemplated in the Lift, Escalator and Passenger Conveyor Regulations. Approval to inspect within the regulatory domain is granted by the Department of Employment and Labour.



ANNEXURE A

SCOPE OF ACCREDITATION

Accreditation Number: LIFT0040

TYPE A

<p>Permanent Address: Mpai Projects and Consulting (Pty) Ltd Erikson Mall 20 Monument Road Kempton Park Gauteng 1620</p> <p>Tel: (010) 020 6283 Cell: 082 495 2076/ 071 879 0242 Fax: 086 512 2480 Email: admin@mpaiprojects.co.za robert@mpaiprojects.co.za</p>		<p>Postal Address: 14 Bree Rivier Norkem Park Kempton Park Gauteng 1618</p> <p>Issue No.: 03 Date of issue: 23 February 2025 Expiry date: 22 February 2029</p>	
<p>Nominated Representative: Mr MR Mpai</p>		<p>Technical Manager: Mr MR Mpai</p>	
<p>Quality Manager: Mr PM du Plessis</p>		<p>Technical Signatory: Mr MG Legodi - 200311007</p>	
Field of Inspection	Service Rendered	Codes and Regulations	
<p>Regulatory: The supply of services as an Inspection Authority for Lift, Escalator and Passenger Conveyor Regulation, Government Notice No. R 828 of 17 September 2010.</p>	<p>Inspection and test of lifts, escalators or passenger conveyors when:</p> <ul style="list-style-type: none"> a) the lift, escalator or passenger conveyor is put into use for the first time; b) any modification to the lift, escalator or passenger conveyor has been effected; c) after any failure has occurred, as defined in the regulation; d) a reportable incident in terms of section 24 of the Act occurs; e) there is a change in the designated competent lift service provider; f) at intervals not exceeding 24 months thereafter; and g) repair of a defect as defined in regulation 6.2 and 7.3. 	<p>SANS Standards as per R 828. SANS 1543: Escalators and passenger conveyors SANS 1545-1: Safety rules for the construction and installation of lifts: Part 1: Electric lifts SANS 1545-2: Safety rules for the construction and installation of lifts: Part 2: Hydraulic lifts SANS 1545-3: Safety rules for the construction and installation of lifts: Part 3: Lifts for persons with physical disabilities (stair-lifting platforms) SANS 1545-4: Safety rules for the construction and installation of lifts: Part 4: Lifts for persons with physical disabilities (vertical platforms) SANS 1545-5: Safety rules for the construction and installation of lifts: Part 5: Electric and hydraulic access, goods only lifts SANS 1545-6: Safety rules for the construction and installation of lifts: Part 6: Rack and pinion lifts SANS 21-1: Safety of escalators and moving walks: Part 1: Construction and installation SANS 50081-1: Electric lifts, safety rules for the construction and installation of lifts SANS 50081-2: Hydraulic lifts, safety rules for the construction and installation of hydraulic lifts. SANS 50081-20: Safety rules for the construction and installation of lifts — Lifts for the transport of persons and goods</p>	

Original date of accreditation: 23 February 2021

Page 1 of 1

ISSUED BY THE SOUTH AFRICAN NATIONAL ACCREDITATION SYSTEM

Accreditation Manager



employment & labour

Department:
Employment and Labour
REPUBLIC OF SOUTH AFRICA

This is to certify that

MPAI PROJECTS AND CONSULTING (Pty) Ltd

has been approved as an inspection authority in terms of the
Lift, Escalator and Passenger Conveyer Regulation 9 (2)
under the Occupational Health and Safety Act,
Act 85 of 1993

SCOPE OF APPROVAL:

- As per Annexure A: Schedule of Accreditation Facility
Number: LIFT0040



Chief Inspector

Valid from: 11 March 2025

Expiry Date: 22 February 2029

LEPC: ISP 0040





SERVICES OFFERED

- CONTRACT NEGOTIATIONS
- REGULATORY INSPECTIONS
- AUDIT AND SURVEYS
- ACCIDENT & INCIDENT INVESTIGATIONS
- INSURANCE ASSESSMENTS
- PROJECT MANAGEMENT
- TRADE TESTS ASSISTANT



Project Management for Lifts and Escalators

+27 (0)10 020 6283
mpaiprjects.co.za mpaiprjects
admin@mpaiprjects.co.za
info@mpaiprjects.co.za



Kivuka
VITZ



Project Management for Lifts and Escalators

+27 (0)10 020 6283 mpaiprjects.co.za mpaiprjects
info@mpaiprjects.co.za / admin@mpaiprjects.co.za

AVATAR
AUTO



US-EMBASSY SAFETY



LIFT SHAFT



US-EMBASSY



**BACK-UP
SOLAR FOR THE LIFT**



071 605 0846 | 010 020 6283



**info@mpaiprojects.co.za |
admin@mpaiprojects.co.za**



www.mpaiprojects.co.za



**20 Monument Road,
Erikson's Mall, Kempton Park,
1620**

MPAI
PROJECTS & CONSULTING